

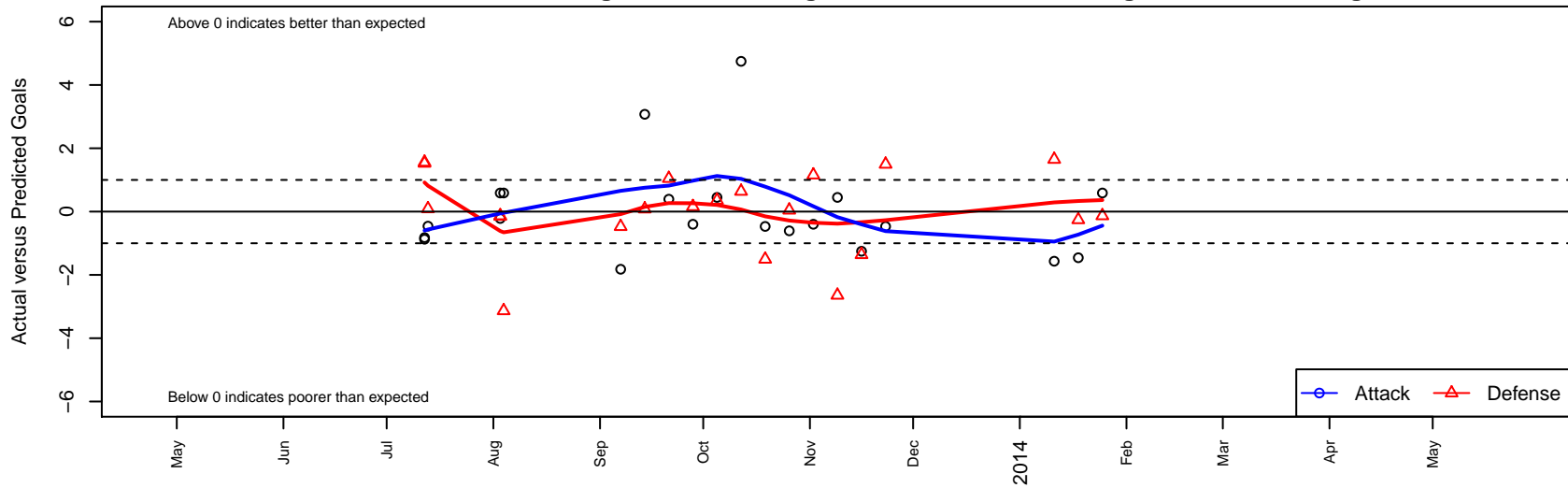
Seattle United S Blue G02

Seattle United Regional
 Seattle, WA
 G02 total strength=238
 attack=0.16 defense=0.13
 fall league = NPSL G11D1
 alt names used:
 Seattle United S Blue [G02]
 Seattle United South G02 Blue
 SU South G02 Blue
 2013 Seattle United South G02 Blue

Venues played:
 Seattle Cup GU11
 Blast Off GU11 B
 NPSL G11D1
 Founders Cup G02



Seattle United S Blue G02
 Dots are actual minus expected GF (blue circles) and GA (red triangles).
 Blue line is smoothed change in attack strength. Red is smoothed change in defense strength.



| | date | home | | away | | venue | pred.home | pred.away |
|------|------------|-----------------------------------|---|------------------------------|---|------------------|-----------|-----------|
| 3087 | 2014-01-25 | Kent United Green G02 | 2 | Seattle United S Blue G02 | 1 | Founders Cup G02 | 1.87 | 0.41 |
| 3083 | 2014-01-18 | Seattle United S Blue G02 | 1 | TC United Wirth G02 | 1 | Founders Cup G02 | 2.46 | 0.74 |
| 3046 | 2014-01-11 | Seattle United S Blue G02 | 0 | Pacific FC Orange G02 | 0 | Founders Cup G02 | 1.57 | 1.65 |
| 2869 | 2013-11-23 | Seattle United S Blue G02 | 2 | Newport FC Tango G02 | 0 | NPSL G11D1 | 2.47 | 1.49 |
| 2782 | 2013-11-16 | Seattle United S Blue G02 | 3 | Newport FC Copa G02 | 2 | NPSL G11D1 | 4.25 | 0.64 |
| 2674 | 2013-11-09 | Seattle United Shoreline Blue G02 | 4 | Seattle United S Blue G02 | 2 | NPSL G11D1 | 1.36 | 1.55 |
| 2528 | 2013-11-02 | Seattle United S Blue G02 | 2 | Seattle United W Blue G02 | 0 | NPSL G11D1 | 2.40 | 1.16 |
| 2382 | 2013-10-26 | Seattle United S Blue G02 | 0 | FC Edmonds Black Ice G02 | 2 | NPSL G11D1 | 0.61 | 2.05 |
| 2248 | 2013-10-19 | Newport FC Tango G02 | 3 | Seattle United S Blue G02 | 2 | NPSL G11D1 | 1.49 | 2.47 |
| 2094 | 2013-10-12 | Newport FC Copa G02 | 0 | Seattle United S Blue G02 | 9 | NPSL G11D1 | 0.64 | 4.25 |
| 1900 | 2013-10-05 | Seattle United Shoreline Blue G02 | 1 | Seattle United S Blue G02 | 2 | NPSL G11D1 | 1.36 | 1.55 |
| 1722 | 2013-09-28 | Seattle United W Blue G02 | 1 | Seattle United S Blue G02 | 2 | NPSL G11D1 | 1.16 | 2.40 |
| 1578 | 2013-09-21 | FC Edmonds Black Ice G02 | 1 | Seattle United S Blue G02 | 1 | NPSL G11D1 | 2.05 | 0.61 |
| 1413 | 2013-09-14 | Seattle United S Blue G02 | 5 | Crossfire Select Reibold G02 | 1 | NPSL G11D1 | 1.93 | 1.08 |
| 1237 | 2013-09-07 | Seattle United S Blue G02 | 0 | Crossfire Select Miller G02 | 2 | NPSL G11D1 | 1.82 | 1.53 |
| 691 | 2013-08-04 | Kent United Green G02 | 5 | Seattle United S Blue G02 | 1 | Blast Off GU11 B | 1.87 | 0.41 |
| 634 | 2013-08-03 | FWFC White G02 | 1 | Seattle United S Blue G02 | 3 | Blast Off GU11 B | 0.85 | 3.22 |
| 635 | 2013-08-03 | Seattle United S Blue G02 | 1 | Kent United Green G02 | 2 | Blast Off GU11 B | 0.41 | 1.87 |
| 338 | 2013-07-13 | Seattle United S Blue G02 | 0 | Snohomish United Black G02 | 4 | Seattle Cup GU11 | 0.46 | 4.09 |
| 303 | 2013-07-12 | Crossfire Select Miller G02 | 0 | Seattle United S Blue G02 | 1 | Seattle Cup GU11 | 1.53 | 1.82 |
| 306 | 2013-07-12 | NW United Powell G02 | 2 | Seattle United S Blue G02 | 0 | Seattle Cup GU11 | 3.56 | 0.87 |